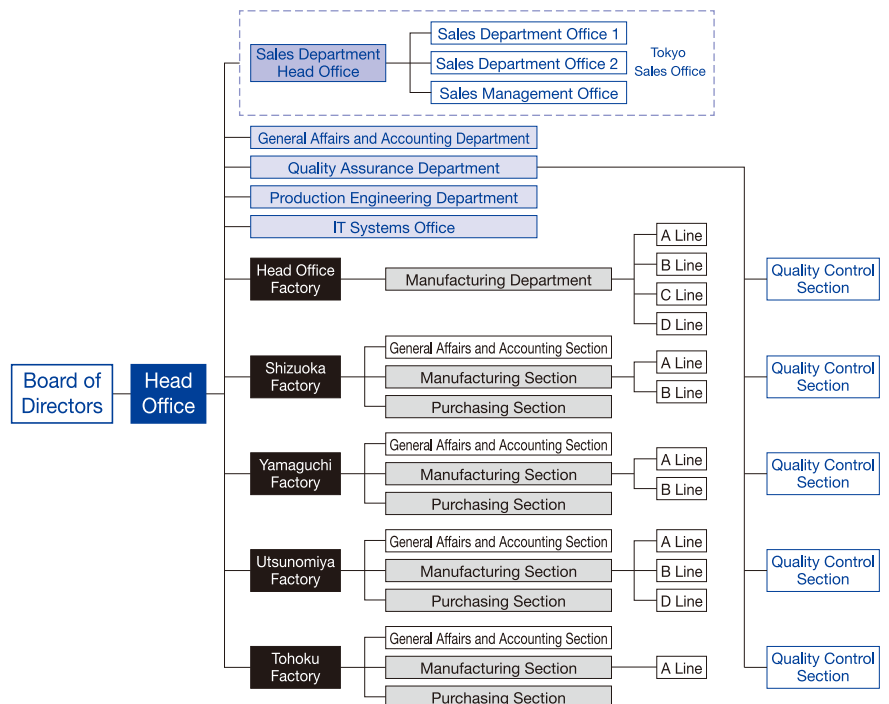


COMPANY  
PROFILE

[Company Profile]

Company name	DAYDO CO., LTD.
President and CEO	Naoyuki Oita
Date of establishment	August 10, 1985 (DAIDOKAKOKIKOGYO CO.,LTD. established on February 16, 1951)
Capital	30 million yen
Number of employees	280 (as of April 2017)
Address	250-2 Uwahara-cho, Kawachinagano-shi, Osaka
Offices and factories	Tohoku factory, Utsunomiya factory, Shizuoka factory, Yamaguchi factory, Tokyo sales office
Main telephone number	+81-721-53-7201
Fax	+81-721-53-7211
Business activities	Housing exterior parts Housing interior parts Housing equipment – functional products Housing lifestyle – miscellaneous products Housing equipment – miscellaneous products Solar-related materials Other
Main customers	Sekisui House, Ltd. Sekisui House Remodeling East Co. Ltd. Sekisui House Remodeling Center Co. Ltd. Sekisui House Remodeling West Co. Ltd. Cleanup Corporation East Japan Railway Trading Company Solar Frontier K.K. Takara Standard Co., Ltd. Dinos Cecile. Co., Ltd. Tokyu Hands Inc. Toto Ltd. Mitsuuroko Co., Ltd. LIXIL Corporation      Other

[Organization Chart]



COMPANY  
PROFILE

[History]

- 1946 Foundation of company (capital: 500,000 yen) for the design and manufacture of chemical machinery and equipment
- 1951 Establishment of DAIDOKAKOKIKOGYO CO.,LTD. (in Sakai city, Osaka)
- 1969 Opening of Utsunomiya factory (in Utsunomiya city, Tochigi prefecture)
- 1972 Relocation of head office factory (to Kawachinagano city, Osaka)
- 1980 Entry into the housing market
- 1985 Establishment of the sales company DAYDO CO., LTD. (from the separation of the manufacturing and sales business of DAIDOKAKOKIKOGYO CO.,LTD.)
- 1990 Start of product development with a focus on storage products
- 1994 Opening of Shizuoka factory (in Kakegawa city, Shizuoka prefecture)
- 1996 Opening of Yamaguchi factory (in Yamaguchi city, Yamaguchi prefecture)
- 1997 Opening of Tohoku factory (in Shikama town, Miyagi prefecture)  
Opening of Tokyo sales office (in Kagurazaka, Shinjuku ward, Tokyo) and launch of downwall (moving parts) products
- 1999 Acquisition of ISO9001 Certification
- 2001 Launch of recycling business as part of the “zero emission activities” at construction factories
- 2003 Relocation of Tokyo sales office (to Akihabara, Taito ward, Tokyo)  
Acquisition of ISO14001 Certification
- 2004 Recipient of the Minister of Health, Labour and welfare Award of Excellence
- 2009 Recipient of the Prime Minister’s Award of Merit for Safety
- 2012 Launch of the hachi market site at the start of the B to C business  
Relocation of Tokyo sales office (to Sotokanda, Chiyoda ward)
- 2014 Installation of automated warehouse for aluminum materials at the Utsunomiya factory
- 2015 Launch of original products bloom, Quick flip, and fold  
Recipient of the Award for Excellence as an Employer of Persons with Disabilities
- 2017 Recipient of Award for Outstanding IT Companies in Kansai 2016

[Environmental Activities]

- Environmental policy
- ◇Daydo is committed to promoting global environment conservation through our eco-friendly manufacturing of environmentally-conscious products to create a user-friendly living environment.
  - ◇We actively endeavor to effectively use and reuse resources and energy, and to reduce waste.
  - ◇We strictly observe the various environmental laws and ordinances, and follow our own self-imposed regulations.

[Daydo Machinery and Equipment]

Daydo has a wide range of manufacturing and processing machinery and equipment to meet the diversified needs of our customers.

Equipment	Functions	Equipment	Functions
Aluminum cutter	Straight line/diagonal cutting	Hot-blast gun	Polyvinyl chloride (PVC) welding
Presser	Hole punching, notching, squeezing	Double-blade bender	Pipe bending
NC elongation and processing machine	Hole punching, hole expansion (round, square), notching, tapping	Laser processing machine	Cutting, hole punching, engraving
Tenon machine	Tenon processing	AP100	2DCAD development drawings, simulation, management of molds, CAM, data management
Drill press	Hole punching, tapping	Sheet Works	3DCAD development drawings, simulation, management of molds, CAM, data management
Turret punch press	Cutting, hole punching, extending, stamping, embossing	Dr.ABE_Blank	Creating nesting data from the automated layout of AP100 development drawings
Brake press	Bending	Dr.ABE_Bend	Creating bending data, simulation, management of molds, configuration bending instructions
TIG welder	Welding (steel, aluminum, sus)	Automated warehouse for aluminum materials	Storage and conveyance
CO <sub>2</sub> welder	Welding (steel)		
Handling robot	Conveyance		
Band saw	Cutting		
Ultrasonic welder	Polyvinyl chloride (PVC) steel plate welding		

